

LSU Health New Orleans School of Nursing

Leaders Defining the Art & Science of Nursing

Tiger Nursing Times

The Official Newsletter of LSUHSC School of Nursing, Alumni Association, & Epsilon Nu



Spring 2016

Message From the Dean

Demetrius J. Porche, DNS, PhD, APRN, FACHE, FAANP, FAAN

The end of our spring 2016 semester is approaching very quickly. As this semester comes to a close, our administrative team, faculty, and students are preparing for our 2017 to 2020 strategic initiatives planning process. Our nursing school has continued to grow and pursue our vision of achieving national recognition with many fiscal constraints. With the support of our students, faculty, alumni, community partners, and friends of the nursing school we have continued to strive and receive recognition for our success. Our NCLEX-RN and advanced practiced certification rates remain high. The School of Nursing graduate program has been recognized as School of the Year by the Louisiana State Nurses Association this spring semester along with four faculty receiving LSNA Nightingale Awards. Also, our undergraduate and graduate nursing students have provided numerous service projects to our community and two graduate students engaged in a national health policy summit in DC. Epsilon Nu achieved national recognition by Sigma Theta Tau with a Chapter Key Award. These are just some of the significant accomplishments of our faculty and students.

The School of Nursing has focused on meeting workforce and health care demands for the growing geriatric and mental health population. We have developed two new Nurse Practitioner concentrations - Adult-Gerontology Primary Care Nurse Practitioner and Adult-Gerontology Acute Care Nurse Practitioner. In addition, our nurse practitioner faculty are working on the development of a Psychiatric-Mental Health Nurse Practitioner concentration along with several other initiatives to meet the growing demand for specialized nurse practitioner practice. Other areas of program expansion include the initiation of the Master of Science in Nursing Clinical Nurse Leader (CNL) program in Louisiana that will be led by Dr. Paula Kensler.

This May, we will graduate our first BSN to Doctor of Nursing Practice Nurse Anesthesia class. Our faculty and staff are very proud of our students' accomplishments and contribution to nursing practice through their scholarly inquiry projects. Our first BSN honors student graduates of the MUSES program (Mentoring Undergraduate Students for Excellence in Scholarship) will receive recognition this May during the Awards Ceremony. Stay tuned, connected, and engaged with our nursing school so that as a team of faculty, staff, students, alumni and community partners we can continue to impact health care in Louisiana and transform our nursing workforce. Have a safe and relaxing summer!

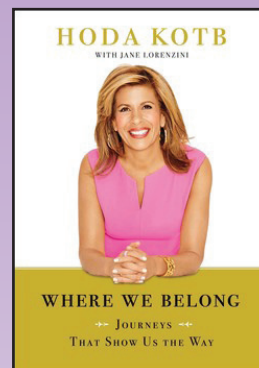


Hoda Kotb and LSU Health Nursing Share Inspirational Journeys

by Leslie Capo, Director of Information Services for LSU Health Sciences Center New Orleans

The LSU Health New Orleans School of Nursing hosted Today Show co-anchor and beloved former New Orleans television news anchor Hoda Kotb on Sunday, January 17, 2016. *WHERE WE BELONG: Journeys That Show Us The Way*, the latest book by Kotb, who is also a New York Times best-selling author, has just hit the shelves. It is a collection of stories about individuals who realized their paths in life were either veering off in a completely new direction or getting too far off course from where they knew they belonged. By following their passions, heeding their gut feelings and listening to their hearts, these people learned how fulfilling life could truly be – just like the LSU Health New Orleans CARE nursing students.

Kotb discussed her book, sharing the stories behind the stories at the event, sponsored by the LSU Health New Orleans Foundation. She also told the audience of nursing professionals, community partners and leaders, along with Health Sciences Center faculty, staff and students, about her own personal journey.



Left: Hoda Kotb with School of Nursing Dean, Dr. Demetrius Porche, and CARE students (left to right) Julie Holtzman, Chelsea Mahoney, Ceile Valerio, Lauren Cazayoux, and Lauren Williams.

Below: Hoda Kotb takes a selfie with the audience before sharing her journey.





ALUMNI ASSOCIATION HOSTS 2ND ANNUAL MUDBUG MARCH

On March 6th, 2016, the LSU Nursing Alumni Association in conjunction with the Pulmonary Hypertension Association sponsored the "2nd Annual Mudbug March to Stomp Out Pulmonary Hypertension" at the Peristyle in beautiful City Park. The day began with the Disco Amigos warming up the participants to disco hits from the 70's and then participants completed a one mile fun walk. A silent auction was also held. The day was very successful as we were able to raise awareness for pulmonary hypertension and money to expand medical research in hopes of finding a cure.



Faculty Members Appointed to Human Trafficking Taskforce's Training & Evaluation Committee

School of Nursing faculty members, Dr. Deborah St. Germain and Dr. Katherine Carter, have been appointed to the Greater New Orleans Human Trafficking Task Force's Training and Evaluation Committee. The mission of the Greater New Orleans Human Trafficking Task Force is to combat human trafficking through collaboration with law enforcement and social service providers, use a victim-centered approach in investigating and prosecuting human trafficking crimes, and provide comprehensive, high-quality social services to all victims of human trafficking.

The Training and Evaluation Committee is comprised of members on the frontlines of human trafficking responses who can best inform training modules. With the assistance of people in the fields of law enforcement, businesses, hospitals, transportation companies, health service providers, faith-based groups, social workers, civic groups, housing facilities, hotel and motel management, and more, the committee creates and disseminates culturally-relevant, field-specific, data-driven trainings that reflect the mission of the task force and shape the work of its members.

Activities include planning for training opportunities for each member, train-the-trainer events, and organizing training opportunities for new members attained through outreach activities. The committee works with the task force to determine guidelines for language used with the public and in a training capacity, common terminology and definitions, and descriptions for survivor/victim populations.

The Training and Evaluation Committee is also responsible for ensuring that New Orleans has adequate and accurate data on the prevalence of and response to human trafficking in our region. The committee uses the data to determine the success of the task force's activities. The committee will undertake a region-wide community needs assessment focused on identifying available resources and potential gaps in resources. This information will be reported back to the general task force and used to improve a coordinated service referral network. The committee will also work with local, state, and federal agencies to collect and analyze data on how many victims/survivors are processed through both the criminal justice system and service provider network. This data will help the task force to better understand what is happening in our community and will inform the direction and goals of the task force.

LSU Health Dental & Primary Care Clinic Grand Opening

On Tuesday, December 8th, LSU Health New Orleans leadership celebrated the grand opening of the LSU Health Dental & Primary Care Clinic. The clinic is the only one of its kind in the region where patients can receive care from both nurse practitioners and dental professionals at the same location. The clinic is funded by a federal grant to LSU Health New Orleans to bring primary care services to underserved areas. The clinic also provides a site where LSU Health New Orleans nursing, dental, and dental hygiene students and residents will work as an integrated health care team.



The clinic, located at 1111 Florida Avenue in New Orleans, is currently open Tuesdays through Thursdays from 8 am to 4 pm. To schedule an appointment, call 504-412-1488.

Dr. Marie Adorno was selected as a volunteer Item Writer for the National Council of State Boards of Nursing Licensure Examination, NCLEX®. Dr. Adorno was approved by the Louisiana State Board of Nursing and was selected to participate on the item development panel of subject matter experts that was held in Chicago in March. She was one of nine nurses from across the nation to be selected for this assignment and was nominated on the basis of clinical specialty and nursing expertise.



Primary Care Family Nurse Practitioner Students Attend AACN's Student Policy Summit

by Aimee Castellon-Maestri, PCFNP-DNP student

Primary Care Family Nurse Practitioner DNP students Aimee Castellon-Maestri and Britta Smith attended the AACN's Student Policy Summit from March 20-22, 2016 in Washington, D.C. The summit was a three-day conference held at the Park Hyatt Washington. Participants were immersed in eight program sessions focused on the federal policy process and nursing's role in professional advocacy. Keynote speaker, Rear Admiral (RADM) Sylvia Trent-Adams, PhD, RN, FAAN, Deputy Surgeon General, delivered a phenomenal and inspiring speech.

Our 2nd day on Capital Hill was the highlight of the trip as we lobbied for AACN and the entire nursing profession as we met with the offices of Louisiana Representatives Richmond, Fleming, Scalise, Boustany and the office of Louisiana Senator David Vitter. We requested \$244 million for fiscal year 2017 in support of the Nursing Workforce Development Programs (Title VIII of the Public Health Service Act), which Britta & I both have received as graduate students.

We also requested support of the National Institute of Nursing Research with \$157 million for fiscal year 2017 as this will allow more complex studies focusing on health promotion and disease prevention. Our last request was for our congressmen to co-sponsor the Improving Veterans Access to Quality Care Act by extending APRN's full practice authority within the Veterans Health Administration, as they already provide when deployed in active duty from any three branches of the US Armed Services Nurse Corps, the Department of Defense, as well as within the Indian Health Service.

We would like to thank LSUHSC-Nursing for giving us the opportunity to attend this incredible conference, especially Dr. Porche and Dr. Jeanfreau! "Nurses need to be sitting at the table and not on the menu!!"



Aimee Castellon-Maestri (left) and Britta Smith (right) at the Policy Summit.



Northwestern State University BSN students Ming Thenge and Robert Tubbs with LSUHSC SON DNP students Aimee Castellon-Maestri and Britta Smith.



The students meet with Keely McGibboney, Legislative Assistant to Congressman Charles Boustany, Jr., MD.

Congratulations to Our Graduates

December 2015

Bachelor of Science in Nursing

Nicole Michelle Adams
Elizabeth Eloise Ardoin
Emily Rogers Attenhofer
Anna Renee Bailey Gibson
Ellyn Elizabeth Baker
Korey Michelle Banks
Devyn Nicole Baron
Veronica Christina Bauer
Abby Nicole Benoit
Paige Elisabeth Bernard
Kristin D. Bonner
Tana Marie Bourgeois
Marcella E. Briceno-Perez
Ashton Ariel Bruno
Dominique Irene Bryant
Bridgette Marie Campbell
Desearae Ann Mariah Campbell
Christine Marie Carman
Timothy Charles Carman
Sarah Catherine Carruth
Valerie Nicole Caruso
Tyler Austin Chetta
Stephanie Benoit Chigoy
Brandie Nicole Celment
Barbara Johnson Conley
Mitchell Aaron Cosse
Mary Micah Biedenharn Cressy
Danielle Marie Deroche
Julia Ann DiGiovanni
Anya Poree Dixon
Stacey Quinn Eddie
Briana Marie Egan
Mary Virginia Emmons
Anthony Joseph Engolia, IV
Hanna Shalayne Fernandez
Kandyce Monique Fisher
Angela Juneau Flores
Jaquetta Edwina Fortuné
Maylene Rosario Franks
Madeleine Mary Gallaher

Alexandra Marie Gonzalez
Blair Kathryn Griffon
Koryn Keller Groves
Kristen Elizabeth Guidry
Celeste Karina Gutierrez
Lauren Elizabeth Hammond
Seth Michael Hardy
Madeline Marie Hayes
Michelle Marie Heisser
Cynthia René Hodnett
Claire Nicole Hosley
Tamsy Rita Kambi
Melanie Elizabeth Keppler
Taylor Nicole King
Susan Elizabeth Knecht
Carlene Marie Kobe
Jamie Grace Kokemor
Kristin Leigh Kymen
Elizabeth Gail Landry
Lauren Nicole Lassiegné
Anthony Joseph LaSuzzo
Nicole Ashley LeCoq
Haley Gary Lee
Keith Alan Lemonier
Monique Mare Loupe
Rachel Elizabeth Louque
Kyle Kalil Madere
Kasey Elizabeth Mang
Estelle Mariano
Emily Linnae Mase
Donna Blazey Mattio
Ana Cristina McReynolds
Mia Catherine Melancon
Gabrielle Elizabeth Miller
Shantell Tenel Mitchell
Elizabeth Ann Montaldo
Shawne Michelle Monticello
Megan Michelli Murray
Rebecca Jean Napolitano
Kristen Elizabeth Nelson

Trang My Nguyen
Mitrell Amaan Osirio
Dean Philip Peralta
Anh-Thu Ngoc Phan
Emily Michelle Pierce
Troy Lynn Polite
Jason Herny Puente
Brady Scott Radosti
Danielle Christine Rafferty
Lisa Danielle Rebenne
Natalie Joyce Reed
Shelby Lynn Reilly
Brooke Elizabeth Robinson
Brooke Lyn Roselli
Karen Elyse Rosenow
Lesli Ann Roussel
Hashim Royal
Christine Marie Ryder
Yesenia Mayela Sanchez
Dominique Jewel Santiago
Michelle Marie Saucier
Kendra Monique Scott
Shelby Kathleen Seiler
Taylor Elizabeth Serpas
Ellen Corry Sharpless
Andrea Rose Shepherd
Elizabeth Marie Simon
Jerica Polancos Semporios
Krystle Lynn Smith
Shannon Byrne Smith
Amy Lynn Stewart
Danielle Ann Stewart
Jessica Lynn Tuohy
Connie Theresa Waguespack
Chelsea Catherine Ward
Emily Rebecca Wells
Monica Lynn Wink
Raymond Anthony Zibilich
Molly Elizabeth Zick
Cory Chandler Zimmerman

Master of Nursing

Heather Rose Grush Abadie
Rebekka Dean Amick
Wandria Coleman Dallas

Hillary Helm Luminais
Christine McCann Kerne

Keithen Dewayne Potts
Andree Lemoine Schaubhut

Doctor of Nursing Science

Deidra Dudley

Doctor of Nursing Practice

Laura Christine Brooks
Mandy Lea Broussard
Tara Blake Comardelle

April Dawn Davis
Kristi Rae Hylan
Amy Senn Kinzie

Kim Mitchell Lange
Dusty Pourciau
Sherry Lynn Rivera

...and Our Award Winners

Chelsea Catherine Ward
Valedictorian

Ellen Corry Sharpless
Salutatorian

Rebekka Dean Amick
Sigma Theta Tau Honor Society Award, Graduate

Mandy Lea Broussard
F. A. Davis Writing Excellence Award

Timothy Charles Carman
Alumni Association Recognition of Class Spirit Award,
Undergraduate

Tara Blake Comardelle
Dolores H. Scheerle Memorial Entrepreneurial Award,
Graduate

April Dawn Davis
Joyce Travelbee Award

Deidra Dudley
Outstanding Doctor of Nursing Science Award

Anna Renee Bailey Gibson
Dolores H. Scheerle Memorial Entrepreneurial Award, BSN

Hillary Helm Luminais
Alumni Association Recognition of Class Spirit Award,
Graduate

Sam Mauras
DAISY In Training Award

Gabrielle Elizabeth Miller
New Orleans District Nurses Association Leadership Award

Megan Michelli Murray
Elsevier Faculty Recognition Award, BSN

Mitrell Amaan Osirio
Jo Ellen Smith Memorial Award
Student Nurses' Association Award

Lisa Danielle Rebenne
Dean's Award
Jo Ellen Smith Memorial Award
Sigma Theta Tau Honor Society Award, Undergraduate

Jacob Rickoll
DAISY in Training Award

Sherry Lynn Rivera
Outstanding Doctor of Nursing Practice Award

Yesenia Mayela Sanchez
Student Government Association Award



In October, the School of Nursing's Nurse Anesthesia Program participated in Southern University and A&M College's Career Day in Baton Rouge.



On October 22, 2015, the School of Nursing participated in the Bonnabel College & Career Fair. The day was successful as faculty members spoke to many students who are interested in nursing as a profession.

EPSILON NU RECEIVES CHAPTER KEY AWARD



Sigma Theta Tau International
Honor Society of Nursing®
Epsilon Nu Chapter

Sigma Theta Tau Epsilon Nu members Dr. Julia Tipton, Angela Scanio, and Dr. Jane Sumner represented the LSUHSC chapter at the 43rd STTI Biennial Convention from November 7 - 11, 2015. The representatives accepted the Chapter Key Award on November 9th on behalf of Epsilon Nu. The STTI Key Award honors chapters that excel in activities such as:

- Membership recruitment and retention
- Publicity and programming
- Professional and leadership development
- Local, national, and international collaboration.

Congratulations to the December 2015 Sigma Theta Tau Honor Society Award recipients. The undergraduate award was presented to Lisa Rebenne and the graduate award was presented to Rebekka Amick.

Epsilon Nu would like to increase student involvement, community service, and fundraising efforts. Please email suggestions for philanthropic causes, community service opportunities, and fundraising ideas to either Dr. Julia Tipton at jtipto@lsuhsc.edu or Angela Scanio at ascani@lsuhsc.edu.

STTI encourages the advancement of nursing science and nursing leadership. Epsilon Nu offers many opportunities to share your time and talents and support nursing excellence. All members, including students, are invited to attend monthly chapter meetings which are held on Mondays from 3:00 pm to 4:00 pm in the School of Nursing Dean's Conference Room. The next meeting is on May 9th. For details or questions, email EpsilonNu@lsuhsc.edu.



Angela Scanio (left) and Julia Tipton (right) at the 43rd STTI Biennial Convention.

Student Spotlight

Sophie Junak
Junior II BSN MUSES



Sophie Junak, Junior II BSN MUSES student, had her abstract accepted for a podium presentation at the 41st Annual Oncology Nursing Society Congress in San Antonio, Texas. Ms. Junak will present her abstract, *The Effects of Chemotherapy on the Humoral Immune System in Survivors of Pediatric Hematological Malignancies: An Integrative Review*, on Saturday, April 30th as part of the Late-Breaking Research Hot Topics session. Her abstract will also be published in the online congress issue of the *Oncology Nursing Forum* and on the congress [website](#). Ms. Junak's mentor in the MUSES program is Dr. Lorrie Powel.

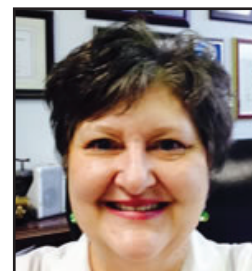
Ms. Junak was also recently named as a recipient of an Oncology Nursing Society Foundation Bachelor's Scholarship. The foundation provides scholarships to individuals who are interested in and committed to oncology nursing and pursuing a baccalaureate degree in nursing.

2015 LSNA NIGHTINGALE AWARDS

The LSNA Nightingale Award Gala was held in Baton Rouge on Saturday, March 5th. The School of Nursing was recognized as Nursing School of the Year for Graduate Degree Programs. The following faculty members were honored with individual awards.



Dr. Laura Bonanno
Advanced Practice Nurse of
the Year



Dr. Stephanie Pierce
Registered Nurse Mentor of
the Year



Dr. Demetrius Porche
Nursing School Administrator
of the Year



Dr. Lorrie Powel
Nurse Researcher of the Year

IN THE COMMUNITY...

October 13th's Night Out Against Crime was a tremendous success for all involved. The students who attended met people from the community and the community enjoyed the benefits of having nursing, medical, and public health students and faculty members in their neighborhood. We took blood pressures, explained the BP values, demonstrated oral hygiene techniques, explained car seat safety, the importance of breast self-exam, and gave away band-aids, ice packs, pill holders, toothbrushes, floss, mouthwash, toothpaste, and cell phone holders all while listening to the St. Augustine High School band.

Thanks to all who made this work. Leslie Capo organized the event, secured the dental supplies for us, and made available an awesome school bus. Dr. Stephanie Pierce provided direction and supplies. Dr. Celestine Carter helped throughout the evening. The students' work was outstanding and greatly admired by the people of the neighborhood.

Students who participated include: Kristen Girault, Haylie Fanz, Amy Graves, Christine Carman, Reynecia Douglas, Madeline Hayes, Jenna Gendron, Katherine Myers, Paige Anderson, Ryne Smith, Claire O'Brien, Deepa Panchang, and Scott Lewis. Special thanks to Madeline Hayes who helped execute the blood pressure handout and Katelyn Freyou who gathered student volunteers. We rocked it!

-Marjorie B. Kraus, RN, MS, BC



SNA members Devin Robinson and Raven Omuemu with faculty member Quinn Lacey volunteered as first-aid providers at the Up2U sports event on January 18th during the Martin Luther King, Jr. celebration at St. Roch Park.



Senior I students volunteered at the USDA Health Fair with Dr. Stephanie Pierce and Dr. Catherine Carter.



Jasmyn Jackson, Mary Grace Manning, and Don Harris conducted BP screenings at the American Can Company Farmer's Market on February 25th. Over 50 customers and vendors were screened.

Dr. Demetrius Porche has assumed the President-Elect position with the Southern Nursing Research Society (SNRS). The mission of the society is to advance nursing research through dissemination and utilization of research findings; facilitating the career development of nurses and nursing students as researchers; promoting the image of nursing as a scientific discipline; and enhancing communication among members.



New MSN Program Available: Clinical Nurse Leader

The Clinical Nurse Leader (CNL) is an innovative nursing role that is a collaboration of the American Association of Colleges of Nursing (AACN), the American Organization of Nurse Executives (AONE), and the Department of Veterans Affairs (DVA). The CNL is prepared at the master's level and is a generalist that cultivates quality improvement and care coordination. After the Institute of Medicine's (IOM) 1999 report on medical errors, *To Err is Human: Building a Safer Health System*, the CNL was created to implement evidence-based practice, collect and evaluate patient outcomes, assess cohort risks, and guide plans for care as indicated. The AACN's (2013) fundamental aspects of CNL practice include:

- Clinical leadership for patient-care practices and delivery, including the design, coordination, and evaluation of care for individuals, families, groups, and populations;
- Participation in identification and collection of care outcomes;
- Accountability for evaluation and improvement of point-of-care outcomes, including the syntheses of data and other evidence to evaluate and achieve optimal outcomes;
- Risk anticipation for individuals and cohorts of patients;
- Lateral integration of care for individuals and cohorts of patients;
- Design and implementation of evidence-based practice(s);
- Team leadership, management, and collaboration with other health professional team members;
- Information management or the use of information systems and technologies to improve healthcare outcomes;
- Stewardship and leveraging of human, environmental, and material resources; and,
- Advocacy of patients, communities, and the health professional team.

The CNL program consists of 37 graduate credit hours leading to a Master of Science in Nursing (MSN). The curriculum consists of pathophysiology, clinical assessment, pharmacology, finance management, micro and macro systems, and healthcare systems leadership. Students will be prepared to assume care coordination for individuals and cohorts of patients to meet their care needs in this rapidly changing healthcare environment. Graduates of CNL programs are eligible to complete the Clinical Nurse Leader board certification offered by the Commission on Nurse Certification (CNC) as well as continuing their education in a practice- or research doctoral program.

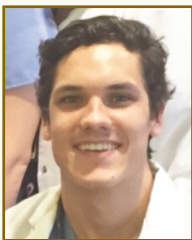
For specific information regarding the Clinical Nurse Leader program, please contact Dr. Paula Kensler by email at pkensl@lsuhsc.edu.

DAISY In Training Award Recipients

Each semester, two undergraduate, pre-licensure nursing students are nominated by patients, families, clinical staff, and instructors to receive the prestigious DAISY In Training Award honoring the nurse-patient connection. Two winners are then selected by a committee of peers and faculty.

The following students were nominated for the December 2015 DAISY In Training Award: Sarah Bourgeois, Katelyn Freyou, Latrandra Hills, Jacob Holt, Anna Koehl, Brittney Langston, Marissa Liantonio, Samuel Mauras, Austin Patin, Jacob Rickoll, John Riley, Ryne Smith, Vuong Tra, and Kelly Vignes.

Congratulations to the December 2015 DAISY In Training Award recipients:



Samuel Mauras



Jacob Rickoll

Nominate a deserving student nurse by visiting: <http://nursing.lsuhs.edu/DaisyInTraining/>

SNA Partners with Delivering Hope NOLA

by Marirose Bernard, SNA Faculty Advisor

In 2015, the LSU Health New Orleans School of Nursing's Student Nurses' Association (SNA) partnered with Delivering Hope NOLA, a non-profit organization that was founded by mothers who had a pre-term baby in one of the NICUs in the New Orleans area. The mission of the organization is to provide hope and encouragement to families of babies under NICU and CCU care.

Our SNA, as well as SNAs from across the state of Louisiana, collected donations throughout 2015 and assembled goodie bags for NICU families. These bags consisted of items such as Teddy bears, premie clothes and hats, hand sanitizer, factory sealed pre-packaged snacks, bottled water, journals and pens, insulated totes for mothers to transport breast milk from home to the hospital, and other items.



On Saturday, December 19th, several SNA members and I had the pleasure of delivering these bags to the following NICUs: Children's Hospital, Ochsner Baptist, East Jefferson Hospital, Tulane-Lakeside Hospital, Touro Infirmary, Ochsner Kenner Hospital, Ochsner Westbank Hospital, Ochsner Northshore Hospital, St. Tammany Hospital, Slidell Memorial Hospital, and West Jefferson Hospital. We were able to bring a little joy, hope, and encouragement to 200 families for Christmas!

Our partnership with Delivering Hope NOLA is an on-going effort. There is a bin outside of my office (room 150) for donations - feel free to donate at any time! Thank you to all of our SNA volunteers for your time and effort to such a great cause!



Congratulations Student Executives

SGA Executive Board Members

President: Haley Williams

Vice President: Megan Herrle

Secretary: McKay Jordan

Treasurer: Megan Harrison

Social VPs: Cara Morgani & Kaela Brand

Historians: Brittany Spizale & Marissa Rizzotto

Parliamentarian: Cassidy Pocrelo

Intramural Chair: Margaret Stark

PCFNP DNP Class Officers

President: Aimee Maestri

Vice President: Shannon Manzella

Secretary: Kristin Stevens

Treasurer: Ashely Gilcrist

Social VP: Carlnetta Rabb

SNA Executive Board Members

President: Brittani Dyess

Vice President: Megan Herrle

Secretary: Devan Peterson

Treasurer: Elena Johns

Historians: Kiera Smith & Sarah Vitaliano

Breakthrough to Nursing:

Lauren Levert

Ryne Smith

Community Service Coordinators:

Sarah Hairston

McKay Jordan

Devin Robinson

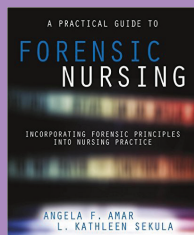
Courtney Stoufflet

Guest Speaker Coordinator: Christina Grishman

Alumni Spotlight

Angela Frederick Amar, PhD, RN, FAAN
BSN May 1987, MN December 1992

Dr. Angela Frederick Amar's book, *A Practical Guide to Forensic Nursing: Incorporating Forensic Principles Into Nursing Practice* was recently published by Sigma Theta Tau International Center for Nursing Press. Dr. Amar is an Associate Professor and the Assistant Dean for BSN Education in the Neil Hodgson Woodruff School of Nursing at Emory University. She is Co-chair of the Expert Panel on Violence of the American Academy of Nursing and a member of the Institute of Medicine Committee on the Biological and Psychosocial Effects of Peer Victimization: Lessons for Bullying Prevention. She received the 2015 Excellence in Practice and Policy Award from the Nursing Network on Violence Against Women International, and she is a Distinguished Fellow of the International Association of Forensic Nurses.



Dr. Jennifer Manning was selected to serve on the American Nurses Association Palliative & Hospice Nursing Professional Issues Advisory Panel and as a member of the National Association of Clinical Nurse Specialists' Research Priorities Taskforce. She has also joined the LA Diversity Council Chapter Leader Board and will be working on development of the quarterly newsletter.



Did You Know . . .

The Student Nurses' Association Blood Drive on February 1st collected 65 units of blood. This exceeded The Blood Center's goal by 20 units!

Upcoming CNE Programs

| | | |
|--|--|-----------------|
| 1, 2, 3, Breathe! (3.0 contact hours) | Friday, May 6th | Slidell, LA |
| Developing Leadership Skills from the Bedside and Beyond (3.0 contact hours) | Friday, May 13th | Covington, LA |
| Acute and Chronic Wound Healing (3.0 contact hours) | Friday, May 27th | Hammond, LA |
| Navigating the Research for Hypertension Treatment Recommendations (3.0 contact hours) | Friday, June 3rd | Slidell, LA |
| Certified Emergency Nurse® Review (14.6 contact hours) | Monday, June 20th & Tuesday, June 21st | New Orleans, LA |

For more information about these and future programs, visit our website:

<http://nursing.lsuhsu.edu/ContinuingEducation/ContinuingEducation.html>

Louisiana State University HSC School of Nursing, Faculty Development, Continuing Nursing Ed, & Entrepreneurial Enterprise is accredited as a provider of continuing nursing education by the American Nurses Credentialing Center's Commission on Accreditation.

To make a submission to this newsletter or update your contact information, email:
Sherri Chalona
sspera@lsuhsc.edu

Faculty Scholarship

Accomplishments

Marie Adorno was selected as a volunteer item writer for the National Council of State Boards of Nursing Licensure Examination.

Kendra Barrier has successfully defended her doctoral dissertation.

Laura Bonanno was named Advanced Practice Nurse of the Year by the Louisiana State Nurses' Association.

Katherine Carter has been appointed to the Greater New Orleans Human Trafficking Task Force's Training and Evaluation Committee.

Jean Cefalu has accepted the position of Academic Coordinator for the Adult-Gero Primary Care NP concentration. She also successfully defended her doctoral dissertation.

Alison Davis has successfully passed the Certified Healthcare Simulation Educator exam.

Leanne Fowler has accepted the position of Academic Coordinator for the Adult-Gero Acute Care NP concentration.

Judith Gentry has been selected as a reviewer for the 2016 Oncology Nursing Society's Publishing Awards.

Gloria Giarratano was appointed by the Executive Board of the American Association of Public Health to serve on the Committee on Women's Rights for a three year term.

Paula Kensler will serve as the Program Director for the Master of Science in Nursing Clinical Nurse Leader and Doctor of Nursing Practice Executive Nurse Leader programs.

Jennifer Manning was selected to serve on the American Nurses Association Palliative & Hospice Nursing Professional Issues Advisory Panel and as a member of the NACNS Research Priorities Taskforce. She has also joined the LA Diversity Council Chapter Leader Board and will be working on development of the quarterly newsletter.

Stephanie Pierce was named Registered Nurse Mentor of the Year by the Louisiana State Nurses' Association.

Demetrius Porche was named Nursing School Administrator of the Year by the Louisiana State Nurses' Association.

Lorrie Powel was named Nurse Researcher of the Year by the Louisiana State Nurses' Association.

Deborah St. Germain has been appointed to the Greater New Orleans Human Trafficking Task Force's Training and Evaluation Committee.

Publications

Adorno, M., Garbee, D., & Marix, M. L. (2016). Improving literature searches. *Clinical Nurse Specialist*, 30(2), 74-80.

Buccola, N. G., as part of the Schizophrenia Working Group of the Psychiatric Genetics Consortium. (2016). Genome-wide association study reveals greater polygenic loading for schizophrenia in cases with a family history of illness. *American Journal of Medical Genetics, Part B: Neuropsychiatric Genetics*, 171(2), 276-289.

Buccola, N. G., as part of the Schizophrenia Working Group of the Psychiatric Genetics Consortium. (2016). Schizophrenia risk complex variation of complement component 4. *Nature*, 530, 177-183.

Buccola, N. G., as part of the Schizophrenia Working Group of the Psychiatric Genetics Consortium. (2016). Genetic influences on schizophrenia and subcortical brain volumes: Large-scale proof of concept. *Nature Neuroscience*, 19, 420-431.

Buccola, N. G., as part of the Molecular Genetics of Schizophrenia Collaboration. (2016). Meta-analysis of positive and negative symptoms reveals schizophrenia modifier genes. *Schizophrenia Bulletin*, 42(2), 279-287.

Buccola, N. G., as part of the Schizophrenia Working Group of the Psychiatric Genetics Consortium. (2015). Modeling linkage disequilibrium increases accuracy of polygenic risk scores. *The American Journal of Human Genetics*, 97, 576-592.

Buccola, N. G., as collaborator. (2015). Transcriptome outlier analysis implicated schizophrenia susceptibility genes and enriches putatively functional rare genetic variants. *Human Molecular Genetics*, 24, 4674-4685.

Fowler, L. H. (2015). Interprofessional implementation of the Richmond Agitation Sedation Scale tool within a nonacademic setting to prevent oversedation in the mechanically ventilated adult. *Ochsner Journal*, 16(1), e47-e48.

Neil, H. Patient education: Are nurses legally responsible. *Med Surg Matters*.

Porche, D. J. (2016). Editorial - Interprofessional men's health practice. *American Journal of Men's Health*, 10(2), 89.

Porche, D. J. (2016). Editorial - Diagnostic errors: Improving diagnostic practice. *American Journal of Men's Health*, 10(1), 5.

Porche, D. J. (2015). Editorial - Care coordination and transition of men's health management. *American Journal of Men's Health*, 9(6), 441.

Presentations

Beyer, E. (2015). Using a Beers criteria based educational intervention to increase practitioner's knowledge and confidence of potentially inappropriate medication with older adults. Presented at the American Public Health Association's 143rd Annual Meeting and Expo in Chicago, Illinois.

Buccola, N. (2015). Schizophrenia genetics: Quest for the Holy Grail. Presented at the American Psychiatric Nurses' Association's 29th Annual Conference in Lake Buena Vista, Florida.

Fowler, L. (2015). Hemodynamic alterations and safely titrating vasoactive drug infusions. Presented at the Louisiana Association of Nurse Practitioners' 21st Annual Primary Care Conference in Shreveport, Louisiana.

Fowler, L. (2015). Secondary stroke prevention: Making progress to reduce risk of recurrent stroke. Presented at the Louisiana Association of Nurse Practitioners' 21st Annual Primary Care Conference in Shreveport, Louisiana.

Fowler, L. (2015). Interprofessional implementation of the Richmond Agitation Sedation Scale tool within a nonacademic setting to prevent oversedation in the mechanically ventilated adult. Presented at Ochsner Health System's 7th Annual Evidence-based Practice/Research Conference in New Orleans, Louisiana.

Porche, D., & Munro, C. (2015). Writing for publication: Getting started. Presented at Southern Nursing Research Society's 30th Annual Conference in Williamsburg, Virginia.

Giarratano, G. (2015). Pregnant women's worries living in a post-disaster community. Presented at the American Public Health Association's Annual Meeting in Chicago, Illinois.

Adult-Gerontology Acute Care NP Concentration (AG-ACNP)

This program is in development and pending LSBN review and approval .

This concentration is projected to be ready for admission Fall 2016.

COMING SOON!!!! FALL 2016

The AG-ACNP concentration will be within the Doctor of Nursing Practice (DNP) program. It is designed to prepared the NP to care for complex disease states the young adult (≥ 13 years old), adult, or older adult may experience in specialty clinics, emergency, acute, or critical care settings.

All AG-ACNP students will take core AG-ACNP and DNP content with the option to further focus their training as a Hospitalist or Intensivist functioning within an interprofessional Hospital Medicine or Critical Care/Pulmonary Medicine team.

Other optional subspecialty areas to be provided via additional clinical experiences include a focus in:

- *Cardiovascular—Stress testing, chest pain units, procedures
- *Palliative care—end of life, hospice
- *Diabetes—acute and chronic management
- *Urology—acute and chronic management
- *Critical Care—MICU, SICU, TICU, procedures
- *Nephrology—acute and chronic management

Admission Criteria

- ◆ **BSN degree with > 3.0 GPA**
- ◆ **Three references**
- ◆ **Minimal GRE score >300**
- ◆ **One year acute care/critical care experience within five years of application**
- ◆ **BLS & ACLS certification via American Heart Association**
- ◆ **Unencumbered RN license**
- ◆ **Interview Completion**

After 13 years of critical care nursing, when seeking the advanced practice role, the AG-ACNP specialty best fit the expertise I already had. Becoming an AGACNP has only added to the wealth and specialization of my knowledge and skills”

- Leanne Fowler, DNP AGACNP, CCRN

For more information contact:

Jillian Gibbs
jgibb2@lsuhsc.edu

Dr. Leanne Fowler
lfowle@lsuhsc.edu

LSU Health
NEW ORLEANS
School of Nursing

Adult-Gerontology Primary Care NP Concentration (AGPCNP)

This program is in development and pending LSBN review and approval .

This concentration is projected to be ready for admission Fall 2016.

COMING SOON!!!! FALL 2016

Students are prepared at the doctoral level as advanced practice nurses in the care of adults across the aging continuum, with expertise in the diagnosis and management of common acute illnesses, disease prevention, and management of stable chronic illnesses across the lifespan.

The curriculum emphasizes coursework, case study analysis, and clinical experiences. Students work with faculty members, nurse practitioners, and physician preceptors in a variety of primary care clinical practicum sites. The sites include: health maintenance organizations, community clinics, long-term care, assisted living, continuing care retirement communities, occupational health settings, and private practices throughout Louisiana.

Admission Criteria

- ◆ **Application through NursingCAS**
- ◆ **BSN degree with min 3.0 GPA**
- ◆ **Three references**
- ◆ **Minimal GRE score 300 or higher**
- ◆ **BLS certification via American Heart Association**
- ◆ **Unencumbered RN license**
- ◆ **Interview**

Optional subspecialty areas to be provided via additional clinical experiences with a focus in:

- *Palliative care—end of life, hospice
- *Advance-Practice Wound Care

For more information contact:
Jillian Gibbs **Jean Cefalu**
jgibb2@lsuhsc.edu **jeric1@lsuhsc.edu**

LSU Health
NEW ORLEANS
School of Nursing